

**C21orf2 Polyclonal Antibody**  
**Purified Rabbit Polyclonal Antibody (Pab)**  
**Catalog # AP59450****Specification****C21orf2 Polyclonal Antibody - Product Information**

Application	WB, IHC-P, IHC-F, IF, ICC, E
Primary Accession	<a href="#">O43822</a>
Reactivity	Rat
Host	Rabbit
Clonality	Polyclonal
Calculated MW	28340

**C21orf2 Polyclonal Antibody - Additional Information****Gene ID** 755**Other Names**

Cilia- and flagella-associated protein 410 {ECO:0000312|HGNC:HGNC:1260}, C21orf-HUMF09G8.5, Leucine-rich repeat-containing protein 76, YF5/A2, CFAP410 ([http://www.genenames.org/cgi-bin/gene\\_symbol\\_report?hgnc\\_id=1260](http://www.genenames.org/cgi-bin/gene_symbol_report?hgnc_id=1260))

**Dilution**

**dilution\_WB** WB ~ 1:1000  
**dilution\_IHC-P** IHC-P ~ N/A  
**dilution\_IHC-F** IHC-F ~ N/A  
**dilution\_IF** IF ~ 1:50 ~ 200  
**dilution\_ICC** ICC ~ N/A  
**dilution\_E** E ~ N/A

**Format**

0.01M TBS(pH7.4), 0.09% (W/V) sodium azide and 50% Glyce

**Storage**

Store at -20 °C for one year. Avoid repeated freeze/thaw cycles. When reconstituted in sterile pH 7.4 0.01M PBS or diluent of antibody the antibody is stable for at least two weeks at 2-4 °C.

**C21orf2 Polyclonal Antibody - Protein Information****Name** CFAP410 ([HGNC:1260](#))**Function**

Plays a role in cilia formation and/or maintenance (By similarity). Plays a role in the regulation of cell morphology and cytoskeletal organization (PubMed:<http://www.uniprot.org/citations/21834987>). Involved in DNA damage repair (PubMed:<http://www.uniprot.org/citations/26290490>).

**Cellular Location**

Mitochondrion. Cytoplasm, cytoskeleton, cilium basal body. Cell projection, cilium, photoreceptor outer segment. Cytoplasm Note=Colocalizes with NEK1 and SPATA7 at the basal body

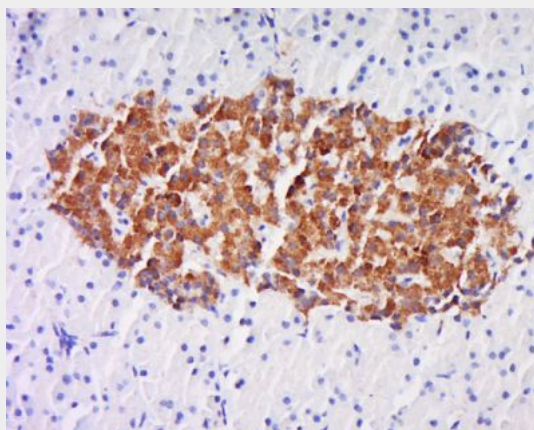
**Tissue Location**

Widely expressed (PubMed:26974433, PubMed:9325172). Expressed in the retina (PubMed:26294103)

**C21orf2 Polyclonal Antibody - Protocols**

Provided below are standard protocols that you may find useful for product applications.

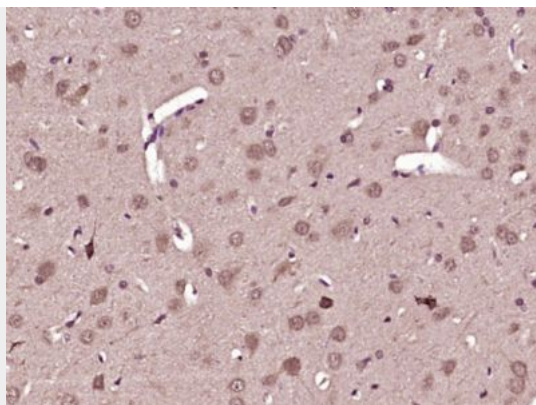
- [Western Blot](#)
- [Blocking Peptides](#)
- [Dot Blot](#)
- [Immunohistochemistry](#)
- [Immunofluorescence](#)
- [Immunoprecipitation](#)
- [Flow Cytometry](#)
- [Cell Culture](#)

**C21orf2 Polyclonal Antibody - Images**

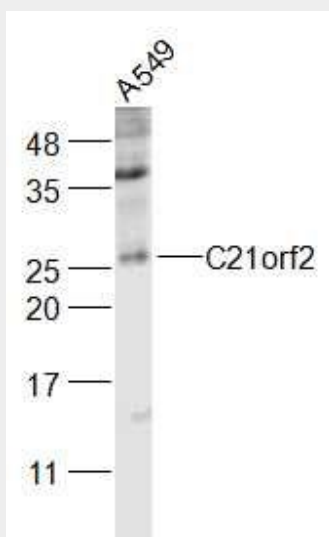
Tissue/cell: Rat pancreas tissue; 4% Paraformaldehyde-fixed and paraffin-embedded;

Antigen retrieval: citrate buffer ( 0.01M, pH 6.0 ), Boiling bathing for 15min; Block endogenous peroxidase by 3% Hydrogen peroxide for 30min; Blocking buffer (normal goat serum,C-0005) at 37°C for 20 min;

Incubation: Anti-C21orf2 Polyclonal Antibody, Unconjugated(bs-9977R) 1:500, overnight at 4°C, followed by conjugation to the secondary antibody(SP-0023) and DAB(C-0010) staining



Paraformaldehyde-fixed, paraffin embedded (Rat brain); Antigen retrieval by boiling in sodium citrate buffer (pH6.0) for 15min; Block endogenous peroxidase by 3% hydrogen peroxide for 20 minutes; Blocking buffer (normal goat serum) at 37°C for 30min; Antibody incubation with (C21orf2) Polyclonal Antibody, Unconjugated (bs-9977R) at 1:400 overnight at 4°C, followed by operating according to SP Kit(Rabbit) (sp-0023) instructions and DAB staining.



**Sample:**

A549(Human) Cell Lysate at 30 ug

Primary: Anti-C21orf2 (bs-9977R) at 1/1000 dilution

Secondary: IRDye800CW Goat Anti-Rabbit IgG at 1/20000 dilution

Predicted band size: 28 kD

Observed band size: 27 kD